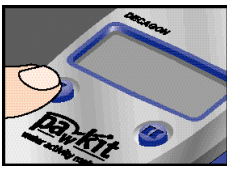


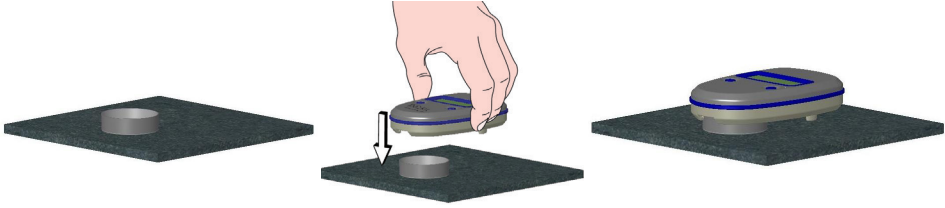
1
ON



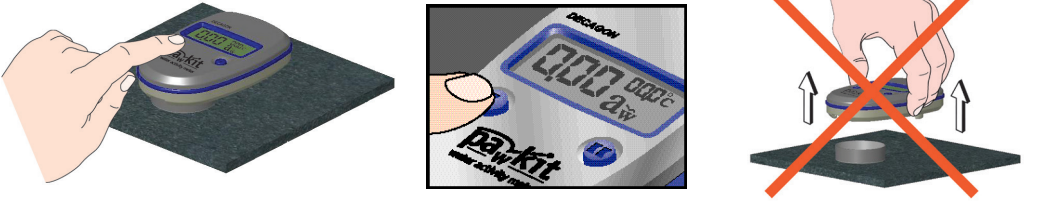
2
OPEN



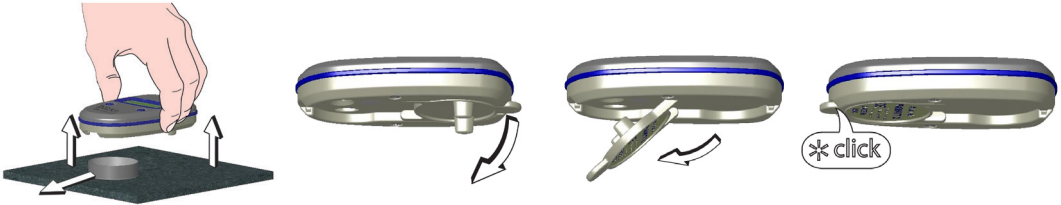
3
CUP
PLACEMENT



4
READ

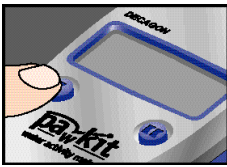


5
CLOSE



* Detailed Operating Instructions are found in Chapter 4 of the Manual © 2015 Decagon Devices, Inc.

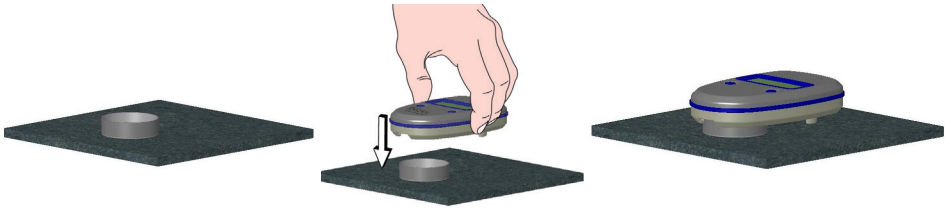
1
ON



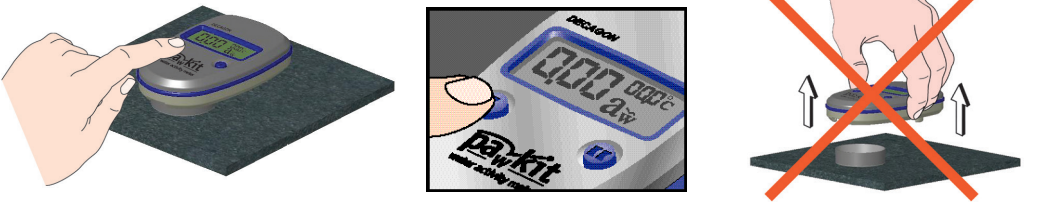
2
OPEN



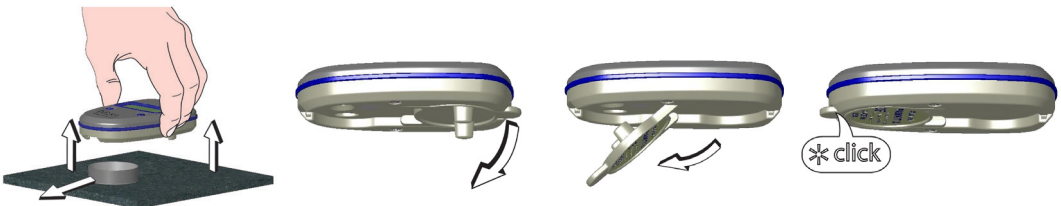
3
CUP
PLACEMENT



4
READ



5
CLOSE



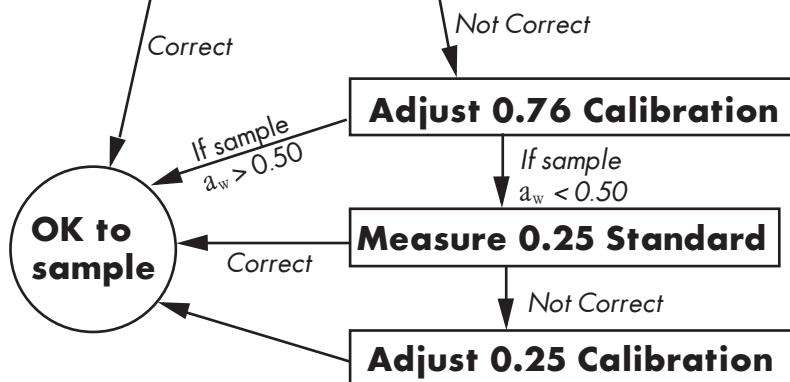
* Detailed Operating Instructions are found in Chapter 4 of the Manual © 2015 Decagon Devices, Inc.

CALIBRATION**Measure 0.76 Standard****Decagon Devices, Inc.**

© 2015 All rights reserved.

www.aqualab.com/pawkit

20-01-15

**Adjusting Calibration:** After taking an a_w measurement,

Press	#	To See	Then	To adjust	Description
Ⓜ	1X		Ⓜ		Adjusts value in top right corner up by .01 with each press of button Ⓜ for .76 calibration standard.
Ⓜ	2X		Ⓜ		Adjusts value in top right corner down by .01 with each press of button Ⓜ for .76 calibration standard.
Ⓜ	3X		Ⓜ		Adjusts value in top right corner up by .01 with each press of button Ⓜ for .25 calibration standard.
Ⓜ	4X		Ⓜ		Adjusts value in top right corner down by .01 with each press of button Ⓜ for .25 calibration standard.
Ⓜ	5X		Ⓜ		Pressing Ⓜ will store the new calibration value, then return to main screen and begin a new measurement.
Ⓜ	8X	Returns to main screen without storing new calibration values. *			

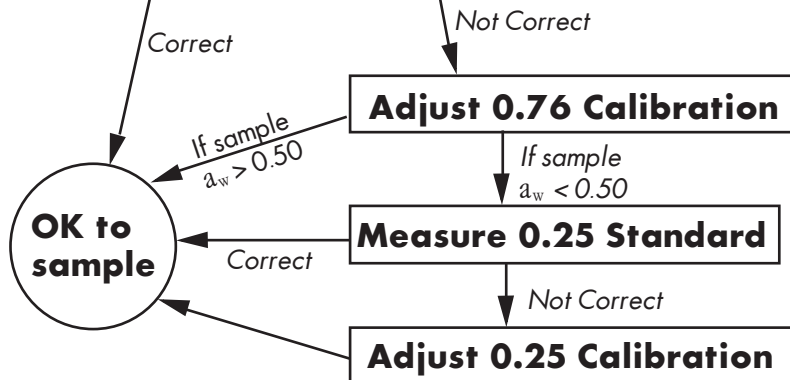
* 6X and 7X are for factory calibration.

CALIBRATION**Measure 0.76 Standard****Decagon Devices, Inc.**

© 2015 All rights reserved.

www.aqualab.com/pawkit

20-01-15

**Adjusting Calibration:** After taking an a_w measurement,

Press	#	To See	Then	To adjust	Description
Ⓜ	1X		Ⓜ		Adjusts value in top right corner up by .01 with each press of button Ⓜ for .76 calibration standard.
Ⓜ	2X		Ⓜ		Adjusts value in top right corner down by .01 with each press of button Ⓜ for .76 calibration standard.
Ⓜ	3X		Ⓜ		Adjusts value in top right corner up by .01 with each press of button Ⓜ for .25 calibration standard.
Ⓜ	4X		Ⓜ		Adjusts value in top right corner down by .01 with each press of button Ⓜ for .25 calibration standard.
Ⓜ	5X		Ⓜ		Pressing Ⓜ will store the new calibration value, then return to main screen and begin a new measurement.
Ⓜ	8X	Returns to main screen without storing new calibration values. *			

* 6X and 7X are for factory calibration.