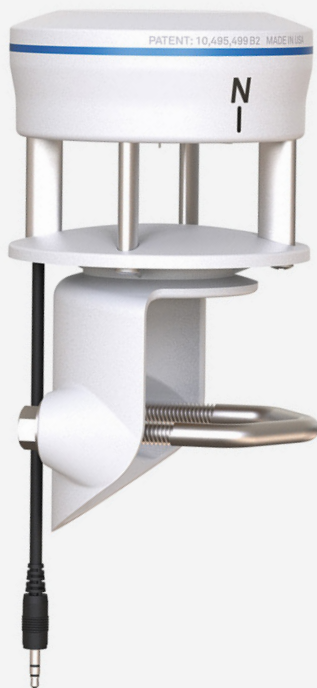




METER

ATMOS 22 GEN 2[®]

SONIC ANEMOMETER



ATMOS 22 GEN 2 QUICK START

Preparation

Verify that all ATMOS 22 GEN 2 components arrived intact. Installation will require a 13-mm (1/2-in) and 8-mm (5/16-in) wrench and a secure mounting location. METER recommends a meteorological stand, pole in cement, or tripod with a 31.8- to 50.8-mm (1.25- to 2-in) diameter.

Set up and test the system (sensors and data loggers) in a lab or office. Ensure the data loggers are using up-to-date firmware and software. Verify all sensors read within expected ranges.

Before beginning installation, consider the surroundings and avoid obstructions. Many installations require the ATMOS 22 GEN 2 to be mounted 2 m above ground, but this can be adjusted as needed.

Please read the complete ATMOS 22 GEN 2 User Manual at <https://meter.ly/atmos22>.



All products have a 30-day satisfaction guarantee.

Connecting

Plug into Data Acquisition System

Connect the stereo plug connector into any METER data logger and configure it to read the ATMOS 22 GEN 2 (refer to [ATMOS 22 User Manual](#)). Select a nonzero measurement interval to ensure data are being logged.

To connect to a non-METER data logger, see the ATMOS 22 Integrator Guide at metergroup.com/atmos22-support.

Verify Readings

Use the **Refresh** function in the software to show a list of readings. Verify these readings are within expected ranges.



ATTENTION

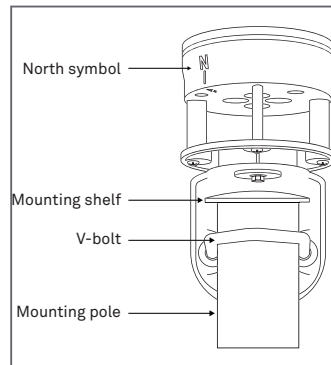
For best results, use the latest versions of METER software and firmware for the computer or mobile device, products, and sensors. Please use the software Help menu to find updates. Consult the sensor user manual for more troubleshooting tips.

Installation

1. Mount Toward True North

Place the top of the post under the mounting shelf.

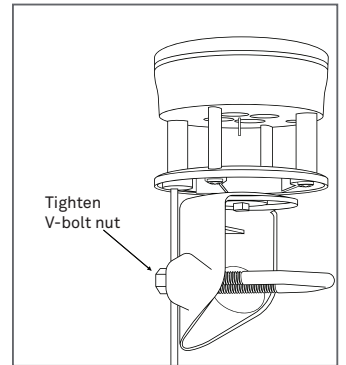
The ATMOS 22 GEN 2 must be oriented with the **N** on the instrument oriented to true north (not magnetic north).



2. Secure the System

Tighten the V-bolt nuts by hand until hand-tight, and then tighten with the 13-mm wrench (included).

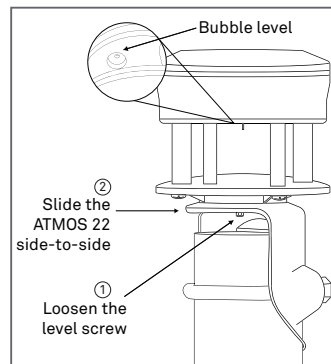
CAUTION: Do not overtighten bolt.



3. Level the Device

Use the bubble level underneath the ATMOS 22 GEN 2.

The weather station angle can be adjusted by loosening the leveling screw attached to the bottom with the 8-mm wrench (included). Once loose, move the weather station side to side as needed to level, and then retighten the screw.



4. Plug Sensor In and Configure Logger

Plug stereo plug connector into the data logger.

Use data logger software to apply appropriate settings to the sensors plugged into each data logger port.

Verify that the ATMOS 22 GEN 2 is reporting to the ZL6 before leaving the installation site.

