

SUPPORT

Have a question or problem? Our support team can help.

We manufacture, test, calibrate, and repair every instrument in house. Our scientists and technicians use the instruments every day in our product testing lab. No matter what your question is, we have someone who can help you answer it.

NORTH AMERICA

Email: support.environment@metergroup.com
Phone: +1.509.332.5600

EUROPE

Email: support.europe@metergroup.com
Phone: +49 89 12 66 52 0



METER

SATURO BOREHOLE UNIT



SATURO BOREHOLE QUICK START

Preparation

The Saturo borehole infiltrometer head houses the water level depth sensor, water connection, and air connection with push-to-connect fittings. The bottom edge of the ring is beveled for easier insertion into the soil and to reduce compaction during installation.

Before installation confirm that all SATURO Borehole Unit components are intact:

- Borehole infiltrometer head
- 10-cm (4-in) auger
- 2 x 1-m (3-ft) extension rod w/ hex quick pin
- Slide hammer w/ hex quick pin
- Auger handle w/ hex quick pin
- 10-cm (4-in) finishing auger w/hex quick pin
- Two 3/8-in x 1 3/4-in pins

If any items are damaged or missing contact METER Group Customer Support. For SATURO updates scan the QR code below or visit meter.ly/saturoupdate.



ATTENTION

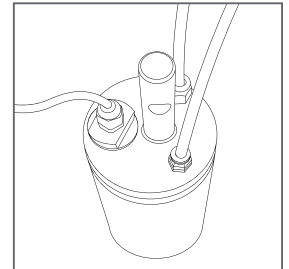


For best results, use the latest versions of METER software and firmware for the computer or mobile device, products, and sensors. Updates can be downloaded at meter.ly/saturoupdate.

Installation

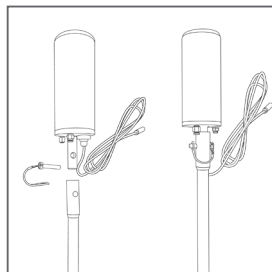
1. Set Up Infiltrometer Head

Connect the water line tubing and the air tubing to the infiltrometer head



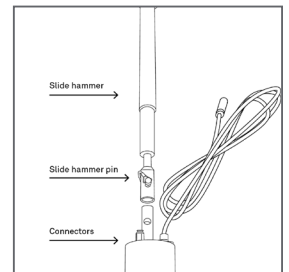
2. Set Up Extension Rod

Connect extension rod to infiltrometer head with connecting pin. If the installation depth is deeper than 1 m another extension rod will be needed.



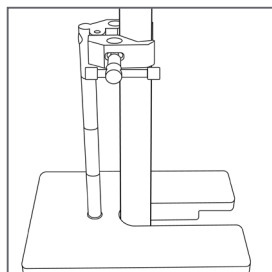
3. Connect the Slide Hammer

Connect the slide hammer to the extension rod with the provided hex pin. Next lower the assembled extension rod with infiltrometer head into augured hole until the auger is sitting at the bottom of the augured hole.



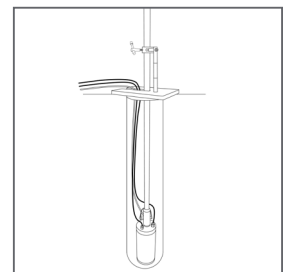
4. Install Centering Tool

Install the installation depth and centering tool to the extension rod at the top of the augured hole. Ensure it is flush with the surface and the installation depth indicator is fully extended.



5. Insert Ring

Use the drop hammer to carefully insert the ring infiltrometer head into the soil. Ensure the assembly stays vertical during installation and limit side to side movement. Check that the sensor is installed to a proper depth (5cm) by using the marks on the installation depth and centering tool.



NOTE: The weight of the hammer will be enough for installation. Do not use additional force to drive the ring into the soil.